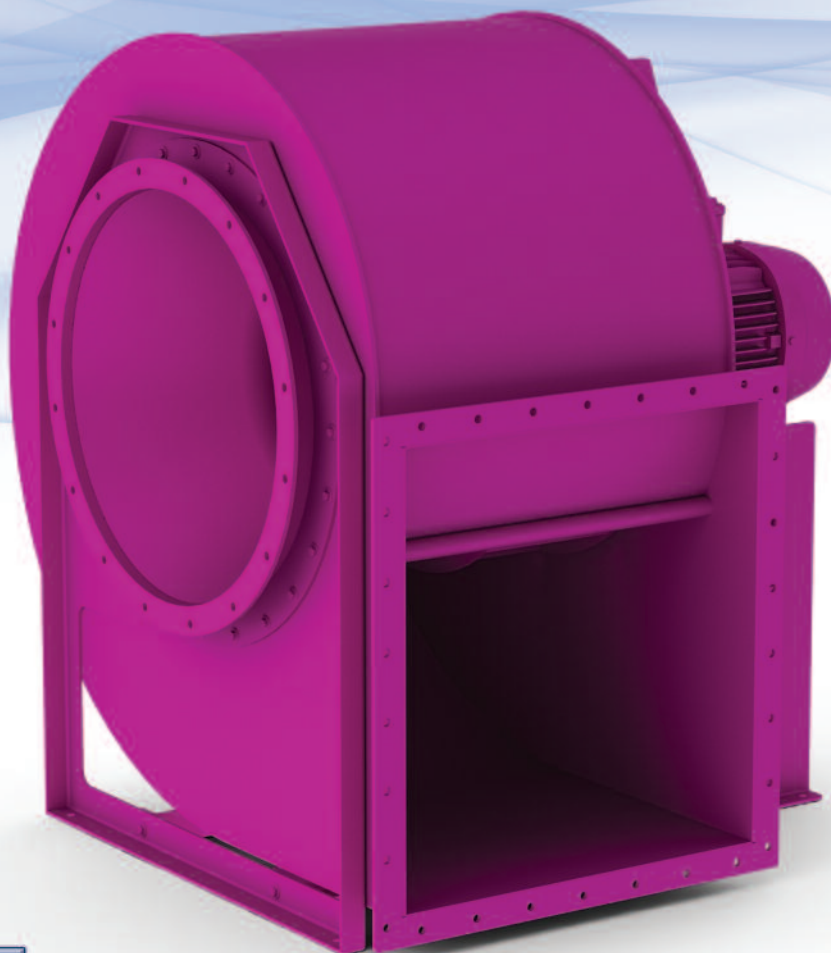




FANS & BLOWERS

Designers and Manufacturers of Industrial Fans



BSZ

Backward Bladed Fan

- Backward curved blades for maximum flow at low pressures.
- Available in single inlet single width (SISW) and double inlet double width (DIDW).
- Direct or belt drive.
- Used in applications such as ventilation, spray booths, heat exchangers, low pressure combustion.
- All available in left and right hand format and various orientations.
- Standard paint or a range of special finishes available.
- Suitable for clean air applications up to approx 300°C.
- A wide range of ancillaries available, eg filters, silencers, flexible connections, AV mounts etc.

BSZ

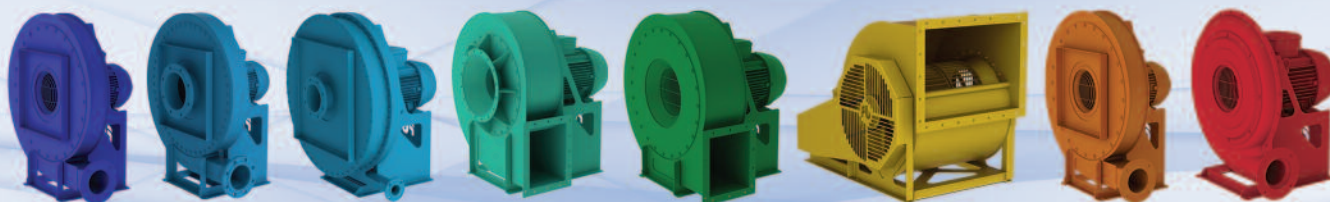
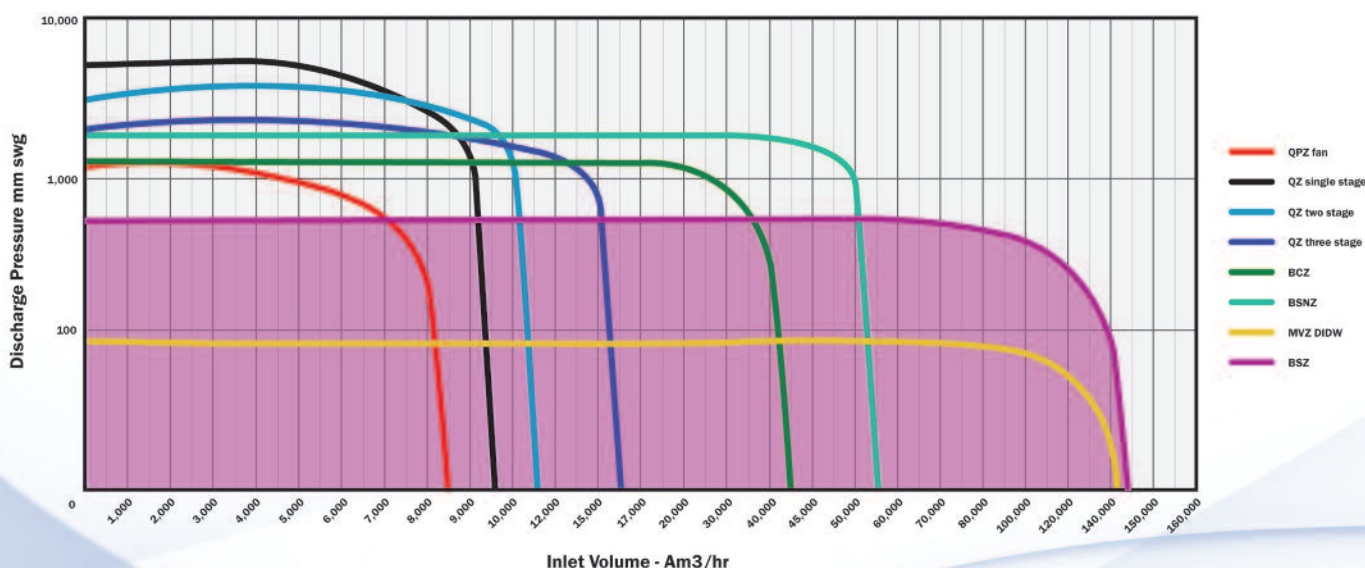
Backward Bladed Fan



The BSZ range incorporates four standard widths, 100%, 75%, 60% and 40%. These widths combined with impeller diameters of 400mm to 1200mm give a volume range of approximately 1000 ft³/min (1700 m³/hr) to 60000 ft³/min (100,000 m³/hr) and pressure up to 30" swg (762mmwg).

The flat backward inclined blade design of the impeller enables the fans to handle air with a light dust loading as well as standard air and hot gas applications.

Fans & Blowers Range Performance Data



FANS & BLOWERS

Fans & Blowers Ltd • Commerce Way • Walrow Industrial Estate • Highbridge • Somerset • TA9 4AG
 T: 01278 784 004 • F: 01278 786 910 • E: info@fansandblowers.com • W: fansandblowers.com