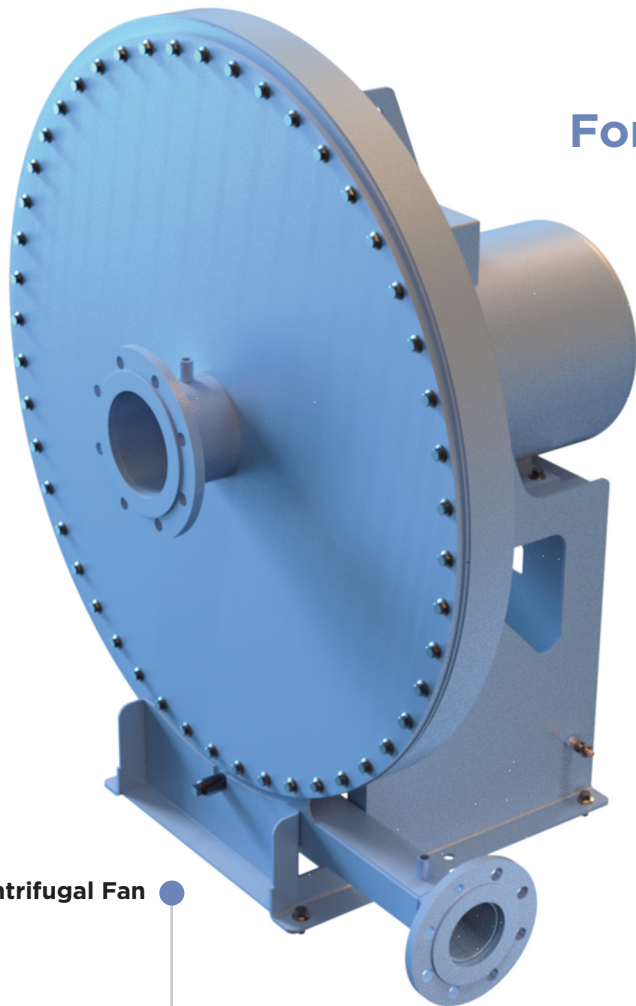


Gas Exhauster Fan

For gas exhaustion applications



GXZ Centrifugal Fan



The GXZ range has been developed specifically as a gas exhausting fan to handle aggressive environments where gas may contain various contaminants such as solids, H₂S and water vapour. The radial bladed impeller is used to minimise solids build up.

KEY FEATURES

- ATEX certified
- 304 stainless steel construction.

SPECIFICATIONS

- Fully welded gas tight casing
- Direct drive or belt driven
- Radial bladed impeller to minimise solids build up
- Available as single, two and three stage
- ATEX Zone 1, Cat 2G or Zone 2, Cat 3G or Zone 21 & 22, Cat 2D & 3D (dust)

Fans & Blowers Ltd
Commerce Way
Walrow Industrial Estate
Highbridge, Somerset, TA9 4AG

T: 01278 784 004
info@fansandblowers.com
fansandblowers.com

ANCILLARIES

- Filters
- Silencers
- Flexible Connections
- Spigots
- ANSI flanges
- Anti-Vibration Mounts

TESTING & STANDARDS

- Designed and manufactured to ISO 9001:2008 standards.
- Tested to BS 848 / ISO 5801 standards.
- Available in ATEX Zone 1, Zone 2, Zone 21 & Zone 22

INDUSTRIES & APPLICATIONS

The GXZ range is designed to handle the arduous requirements in industries such as landfill **waste management**. These products are designed, manufactured, tested and certified to handle the hazardous environments they are likely to be installed in.